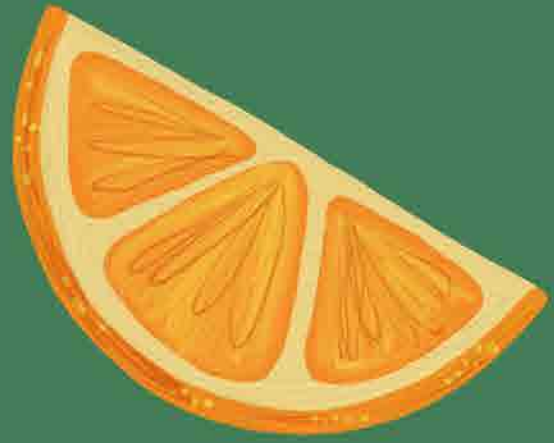


# FOOD WASTE



# HOW DOES FOOD END UP ON OUR PLATE?







# WHAT DOES GROWING FOOD TAKE?





# END FOOD WASTE, SAVE WILDLIFE

When we waste food, farmers need to grow more food. This means they need more land.

Then, animals don't have as much land to live on or natural food to eat.





# HOW MUCH WATER DO WE USE TO PRODUCE OUR FOOD?



180 lt



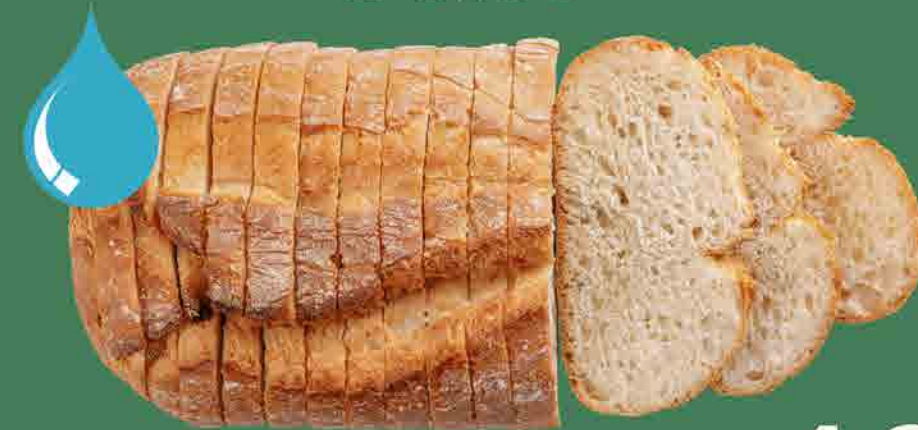
5000 lt

250 ml



75 lt

a slice



40 lt

a cup



140 lt

# WHERE DO WE PROVIDE FOOD FROM?



**INDUSTRIAL  
FOOD CHAIN**

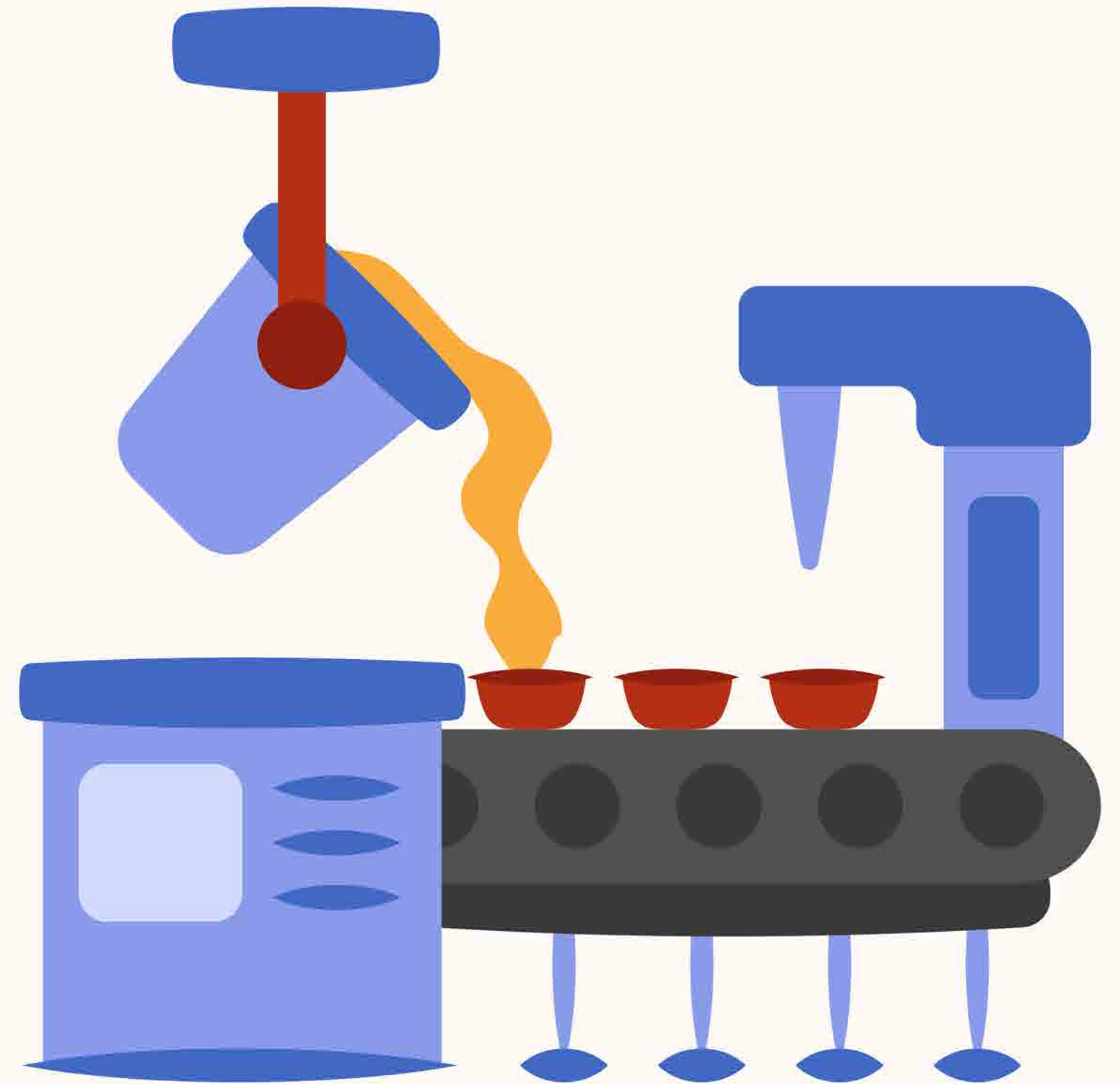


**VILLAGE FOOD  
NETWORK**



# INDUSTRIAL FOOD CHAIN

- Big and national/international businesses
- Corporate compaines
- More chemicals and additives
- Controlled and influenced by governments, politicians, bankers, etc.





# VILLAGERS FOOD NETWORK

- Little or medium-size businesses
- Farmers, fishermen, hunters, etc.
- Less chemicals and additives
- More local
- Cleaner than industrial production



# WHERE DO MOST PEOPLE GET THEIR FOOD?

70%

(4,5-5,5 billion)

of people get their food from the villagers food network



30%

of people get their food from the  
industrial food chain



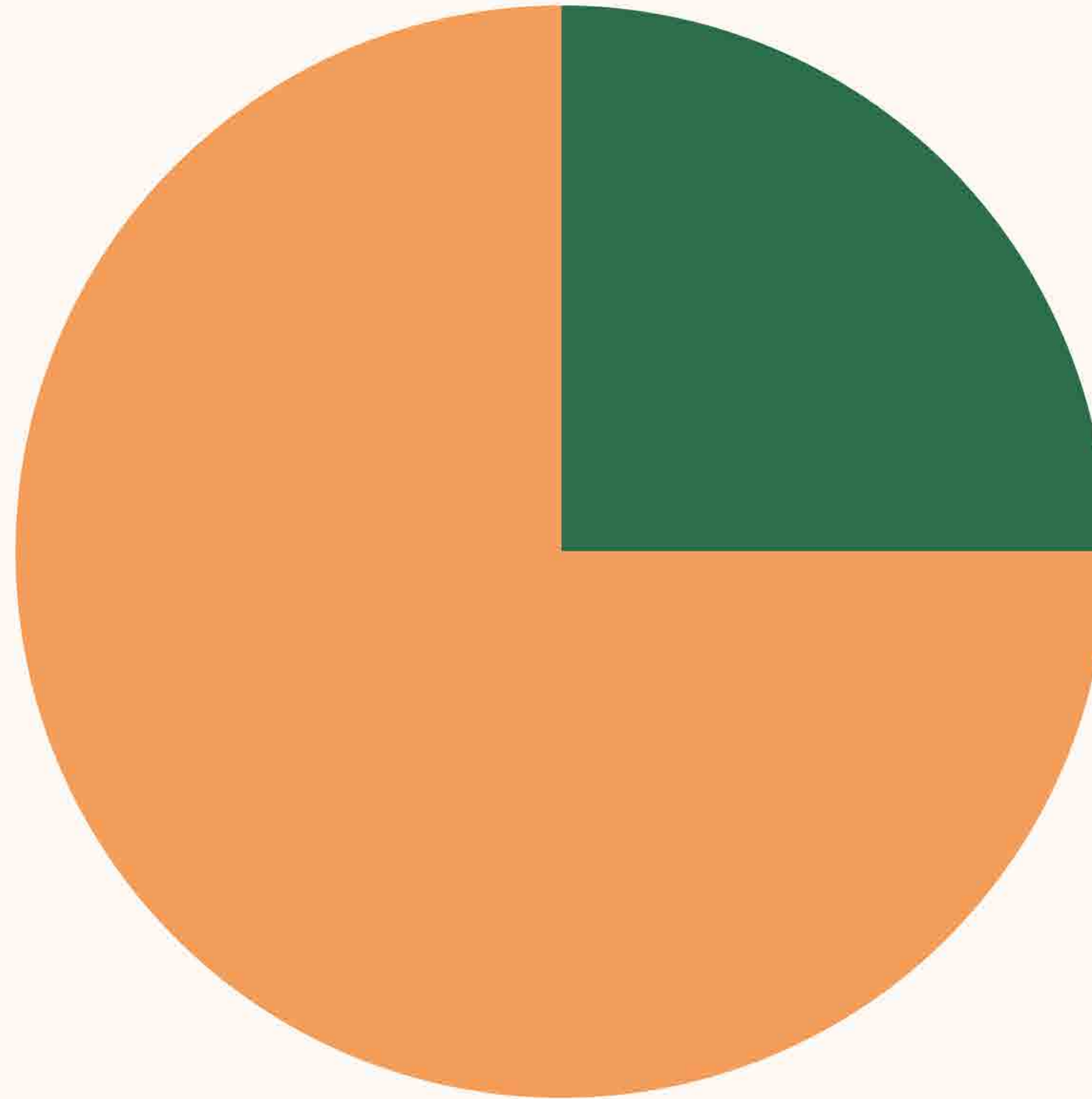
feeds more than  
70% of the people



Villagers Food Network  
uses less than

**25%**

of agricultural lands



Industrial Food Chain  
uses more than

**75%**

of agricultural lands



**So, where does the food produced  
by the chain go?**





**44%**  
is spent on meat production



**15%**  
is lost during transportation and storage



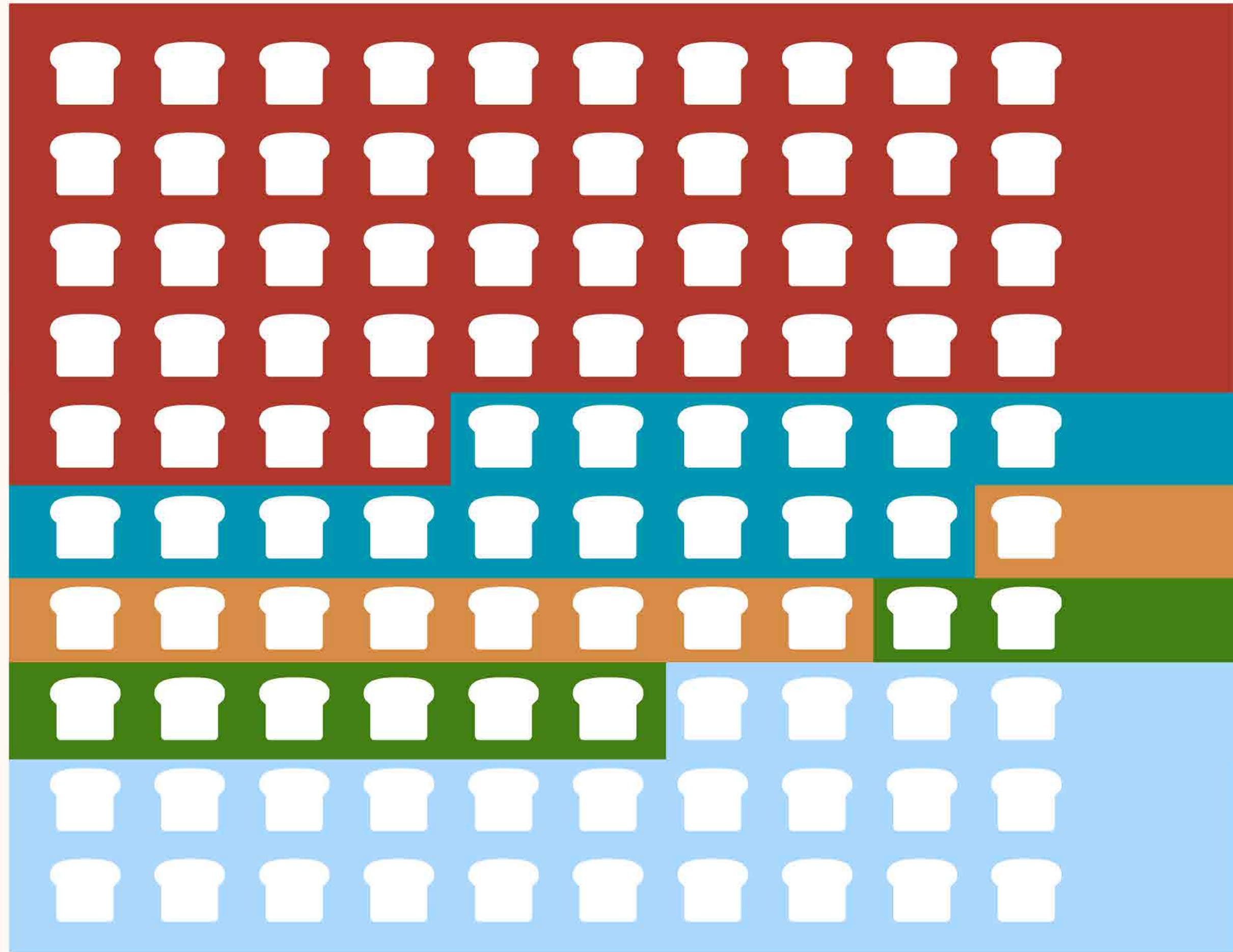
**9%**  
is produced as biofuel and other products



**8%**  
is wasted at home



**24%**  
feeds people





WHAT IS THE DIFFERENCE?

FOOD WASTE X FOOD LOSS







# FOOD LOSS

Food loss refers to any food that is discarded, incinerated or otherwise disposed of along the food supply chain from harvest/slaughter/catch up to, but excluding, the retail level



# FOOD WASTE

Food waste refers to food that is discarded at the level of retailers, food service providers and consumers.





# IN WHICH WAYS IS FOOD WASTED?



Removing fresh produces  
during sorting process



Discarding products when  
they're close to or beyond their  
expiration date



Throwing out unused or  
leftover food

# HERE ARE SOME FACTS







Roughly  $\frac{1}{3}$  of the food produced in the world for human consumption is lost or wasted.

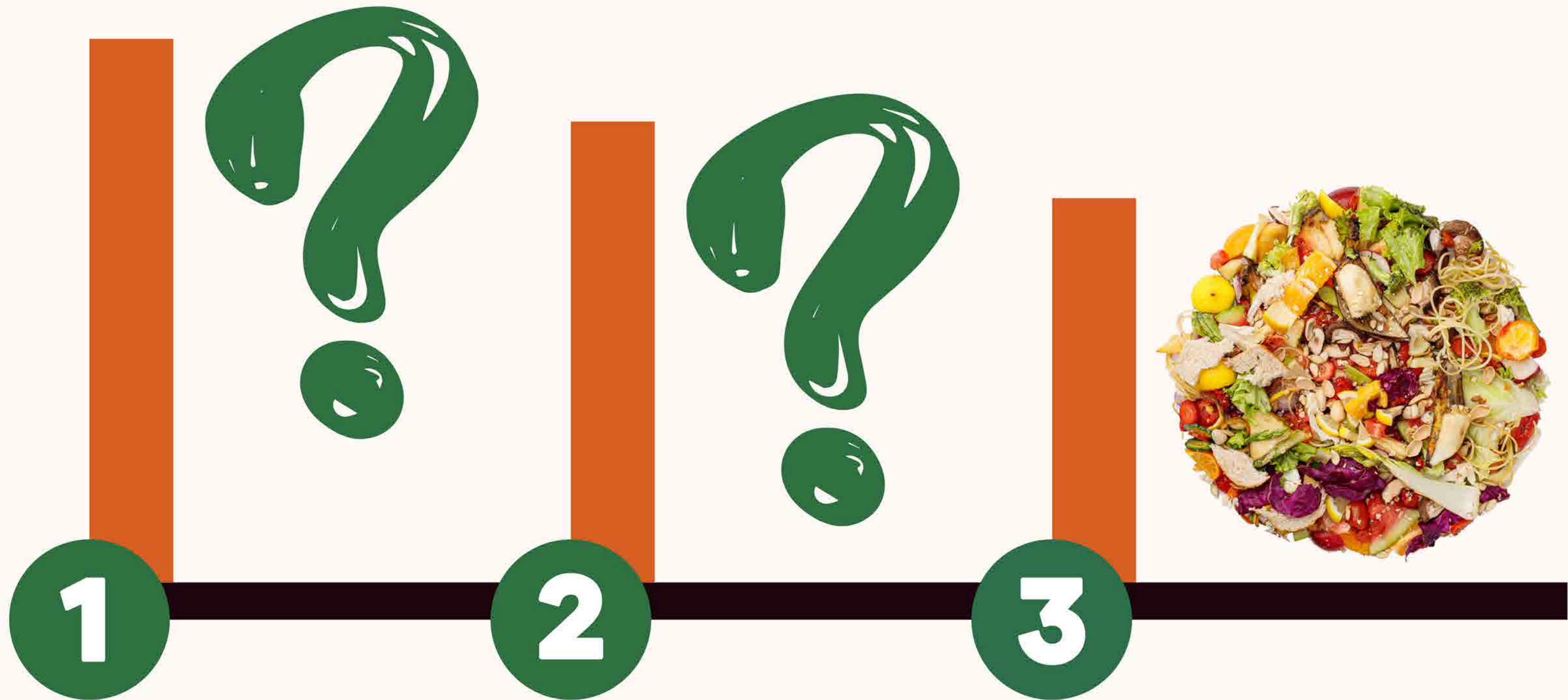




Food waste alone generates about 8% - 10% of global greenhouse gas emissions.

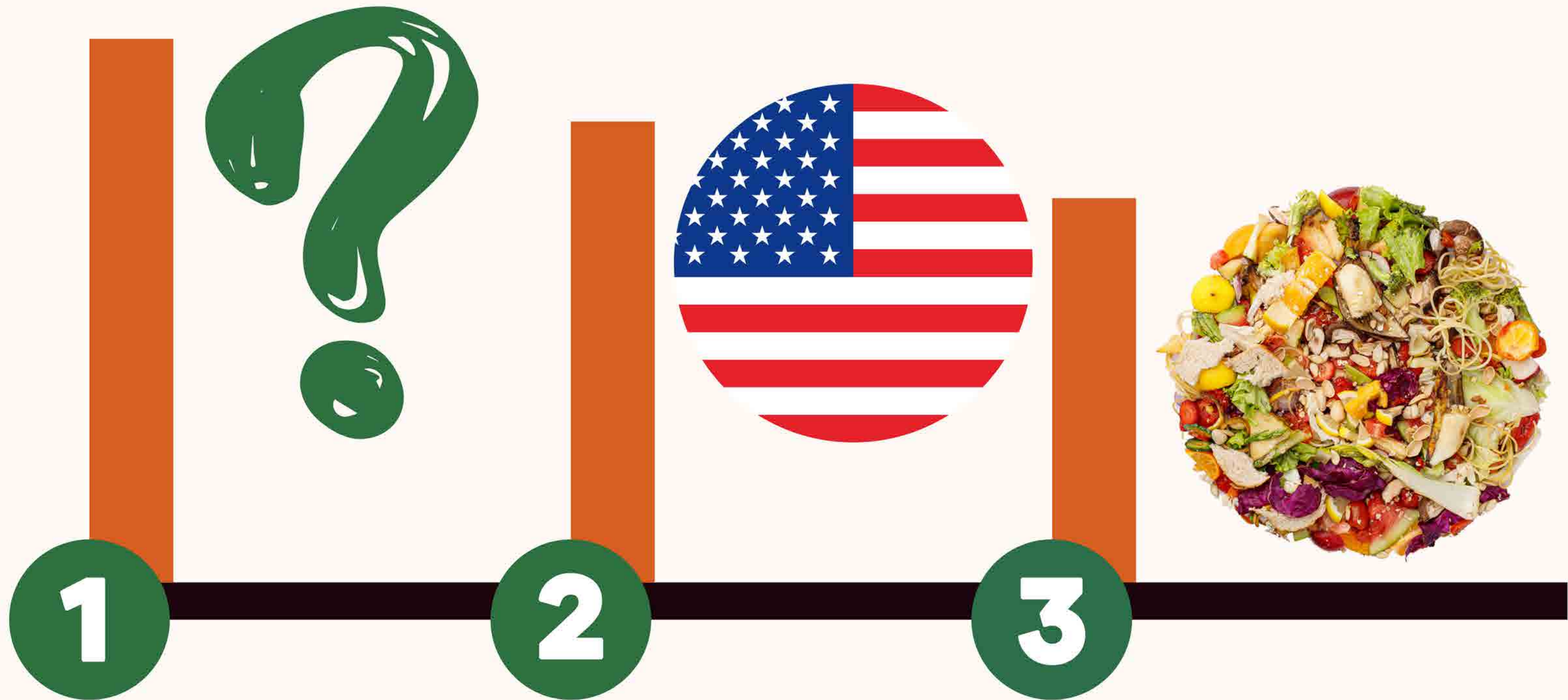


If food waste were a country, it would be the third largest emitting country in the world.



*The 3 biggest greenhouse emitters*

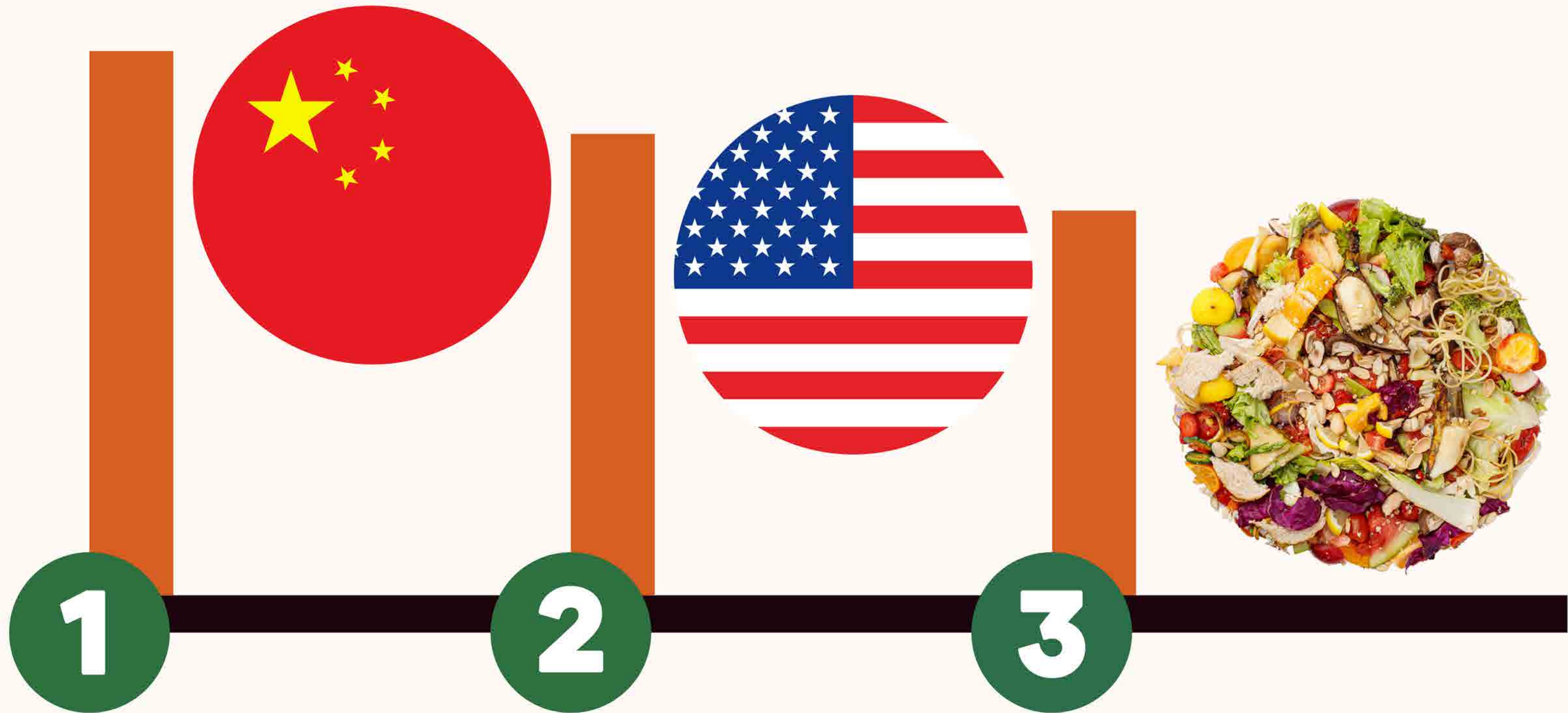
If food waste were a country, it would be the third largest emitting country in the world.



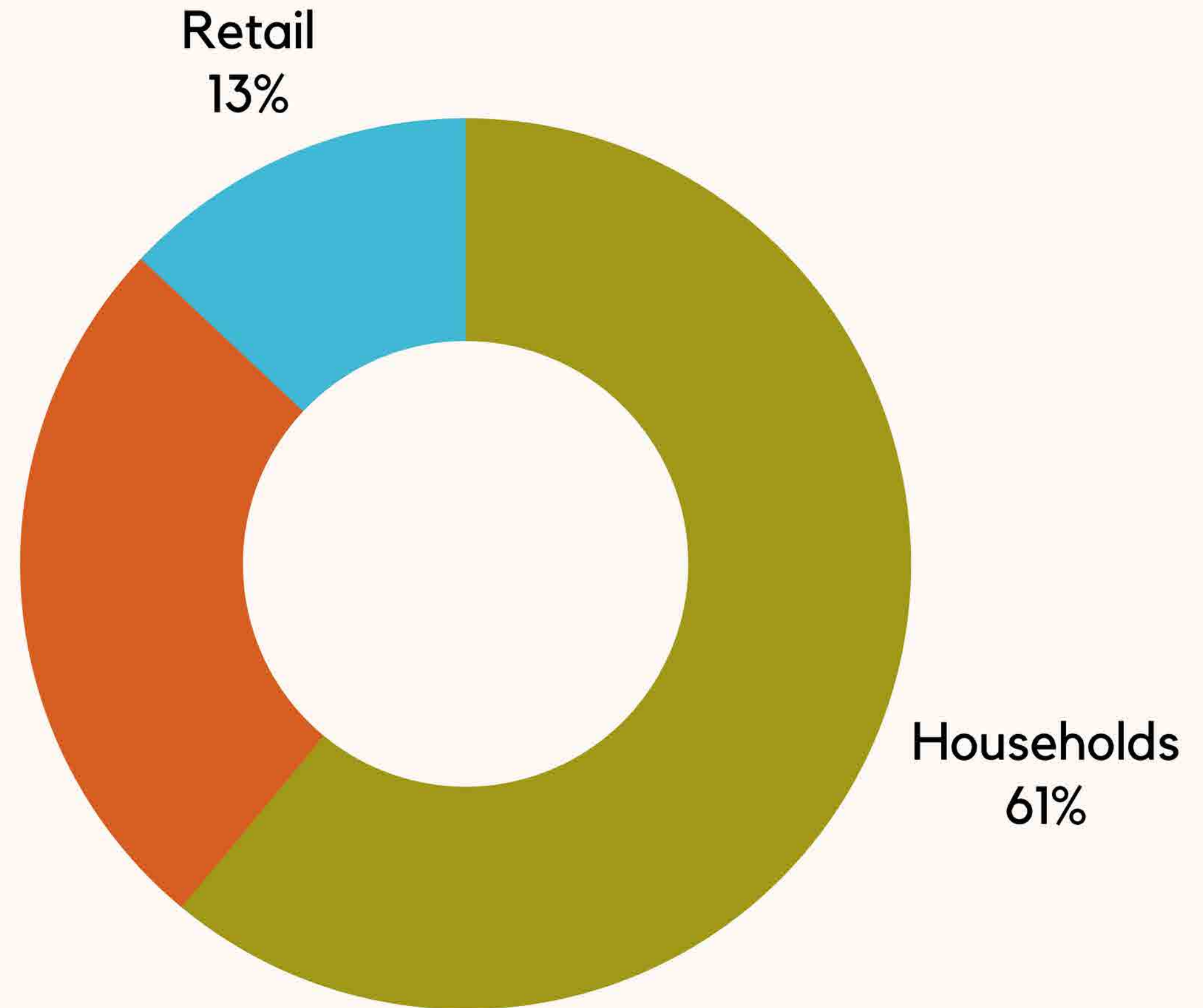
*The 3 biggest greenhouse emitters*



If food waste were a country, it would be the third largest emitting country in the world.



*The 3 biggest greenhouse emitters*



Latest estimates suggest that around 931 million tonnes of food waste were generated in 2019.



Around 88 million tonnes of food waste are generated annually in the EU.



**174 KG**

**PER PERSON**





Around 88 million tonnes of food waste are generated annually in the EU.



**143 BILLION**  
**EUROS**





Around 88 million tonnes of food waste are generated annually in the EU.



**1700000000**

**TONS OF CO2**





# WHAT IS THE SOLUTION?







**AT HOME**



**AT WORK**



**AT SCHOOL**

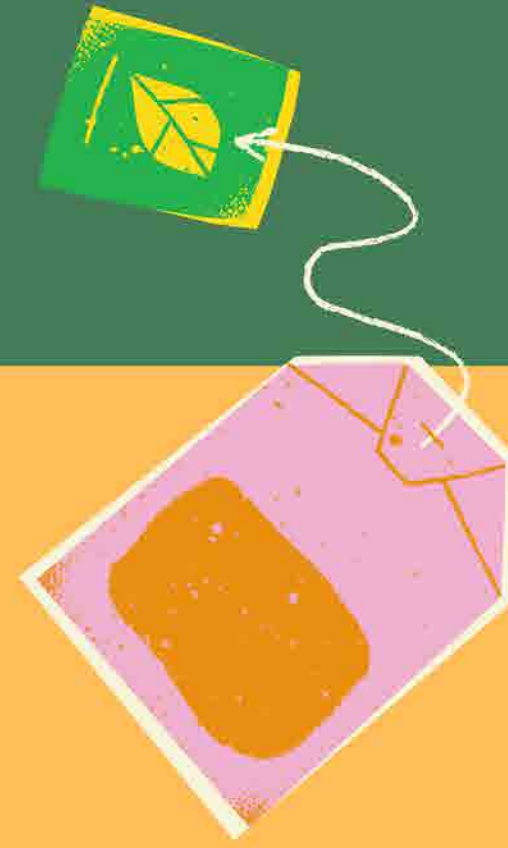


**OUTDOOR**



**POLICIY MAKING**

# THANK YOU



**Colors of  
World**  
YOUTH COMMUNITY

This presentation was prepared within the framework of the project entitled "Eat, Act, and Think Sustainably" and numbered 2022-3-TR01-KA153-YOU-000098552 by Colors of World Youth Community.

The European Commission's support for the production of this publication does not constitute an endorsement of the contents, which reflect the views only of the authors, and the Commission cannot be held responsible for any use which may be made of the information contained therein.